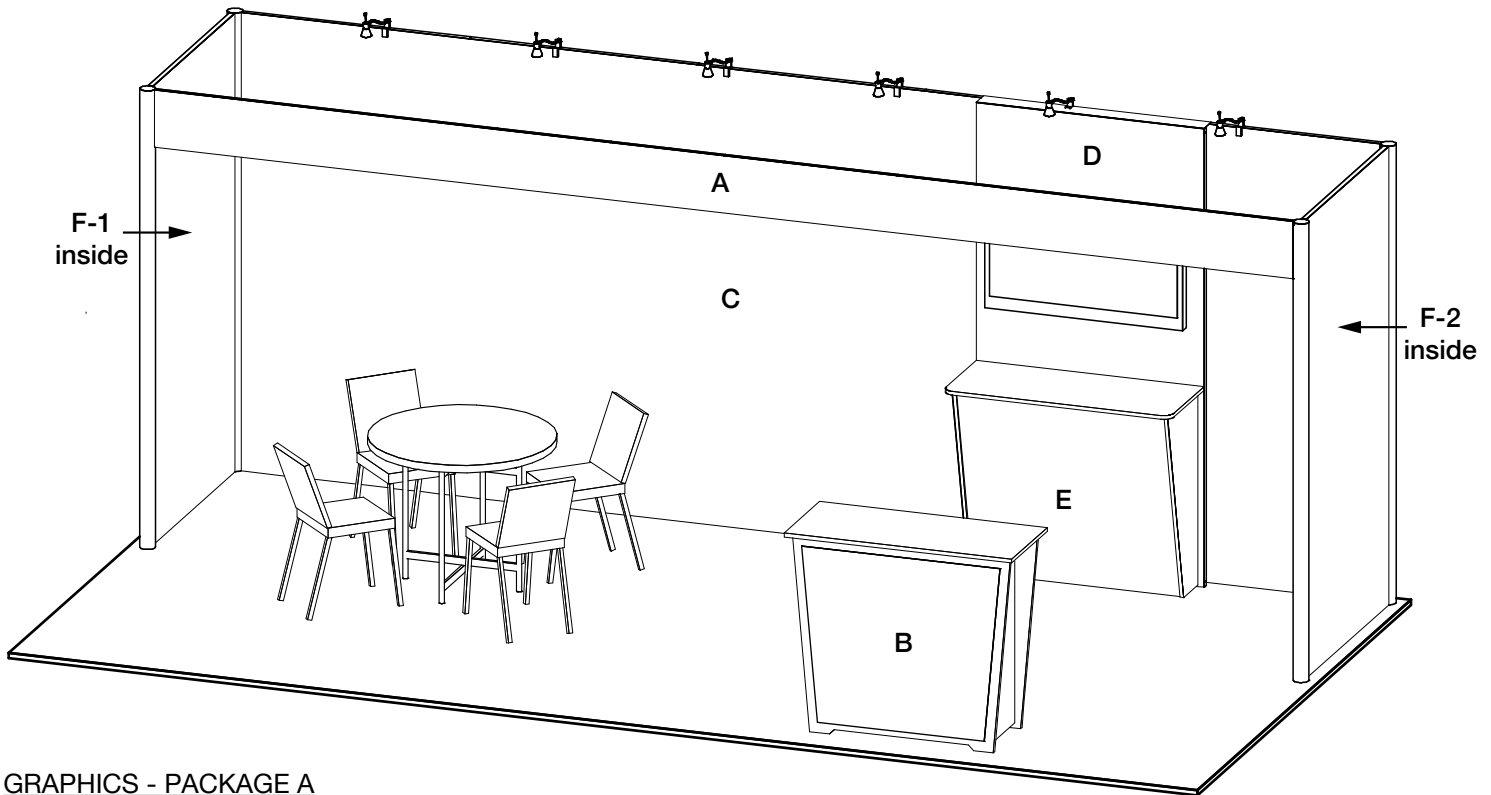


KIT AS SHOWN INCLUDES

- (1) "Edge lit" In-wall monitor mount, accommodates up to 46"w monitor. Height is not adjustable, position may vary based on your model.
 - (1) "EV2" wall counter, 46"w x 19"d black laminate top, white laminate sides.
 - (1) long, booth spanning identification header.
 - (1) "EV2" standalone counter, 46"w x 20"d black laminate top, choice of sintra sides or graphics.
 - (5) arm lights.
- Configuration is reversible left to right.

CHOICE of black, white or gray sintra provided standard for all solid infill walls that do not have graphics, unless described otherwise.

- * White laminate standard for EV2 Wall Counter sides. Front may be choice of sintra colors or printed graphic.
 - White laminate standard for EV2 Standalone Counter front. Sides may be choice of sintra colors or printed rigid graphic.
- Consult your account rep for options. Additional elements, merchandising and graphics are available.



GRAPHICS - PACKAGE A

- A. - (1) 230"w x 11.5"h, flexible.
- B. - (1) 40"w x 35"h maximum size, SINGLE USE "low-tac" adhesive, front. Refer to template provided.
White laminate will be visible 2" at edges or behind any smaller profile cut graphics. (Vector art/ cut lines must be provided for profile.)

GRAPHICS - PACKAGE B

- Package A, PLUS
- C. - (1) 230"w x 92"h, rigid. Approximately 46" will be obscured by workstation, starting about 23" from right edge. (Position can be moved.)

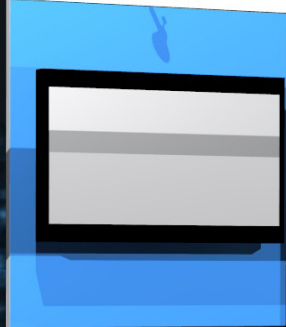
GRAPHICS - PACKAGE C

- Package A and B, PLUS
- D. - (2) 46"w x 92"h, rigid. Bottom 40" of graphic will be obscured by counter. Monitor position may vary based on your model.
- E. - (1) 42"w x 40"h, standard or backlit graphic front, flexible, fabric or rigid. * White solid standard.
- F. - (2) 46"w x 92"h, rigid.

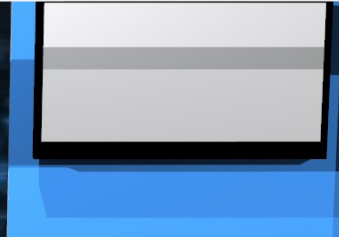
KIT PACKAGE PRICING DOES NOT INCLUDE chairs, benches, tables, computers, monitors/cables, and carpet.
Additional elements, merchandising and graphics are available through your account representative.

Please follow our graphic file submission guidelines for all printed elements to avoid resubmission requests and delay.
Allow at least 10 business days for graphic production.

FORNETIX®

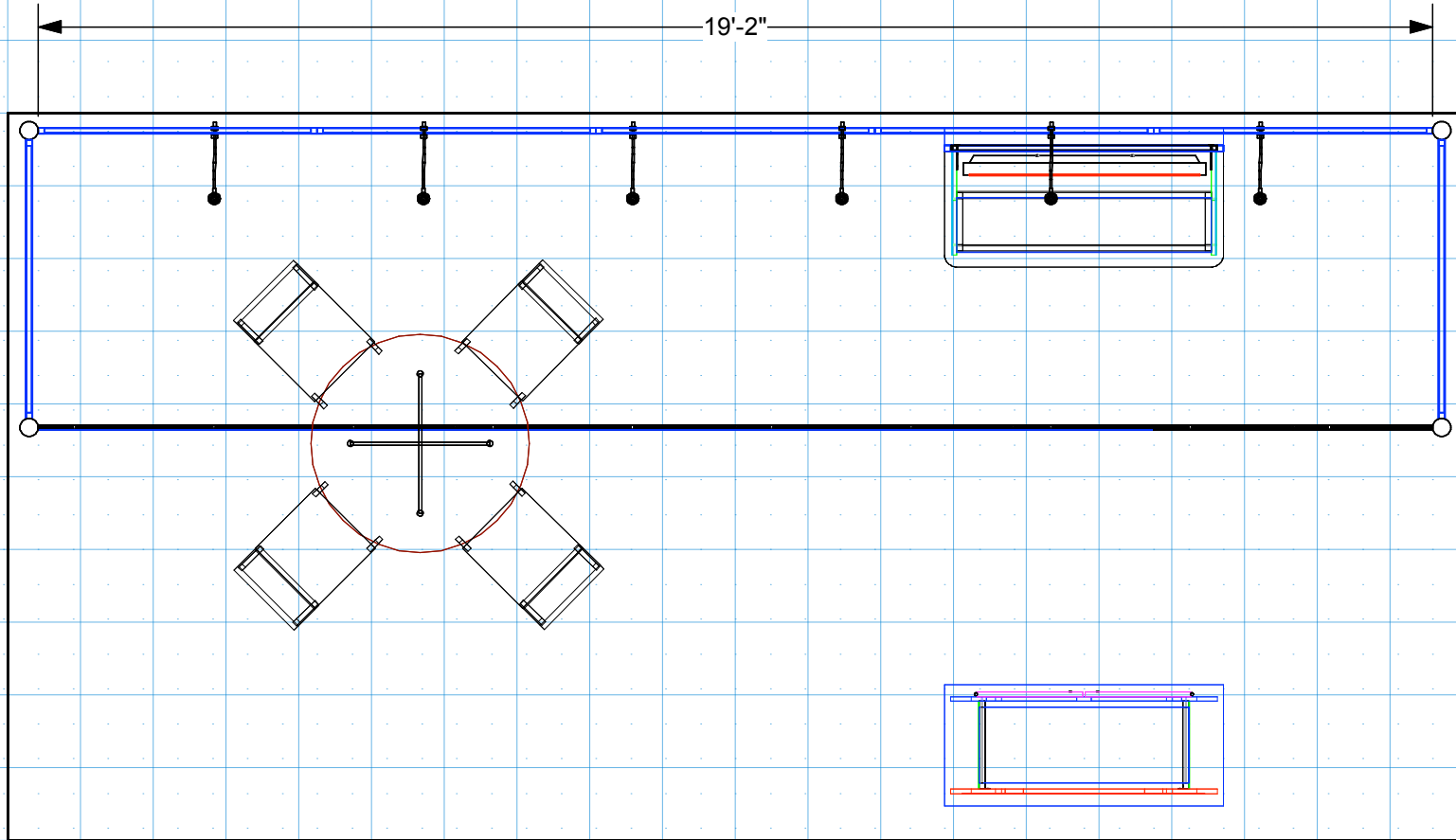


FORNETIX[®]



FORNETIX





DRAWN BY: LH

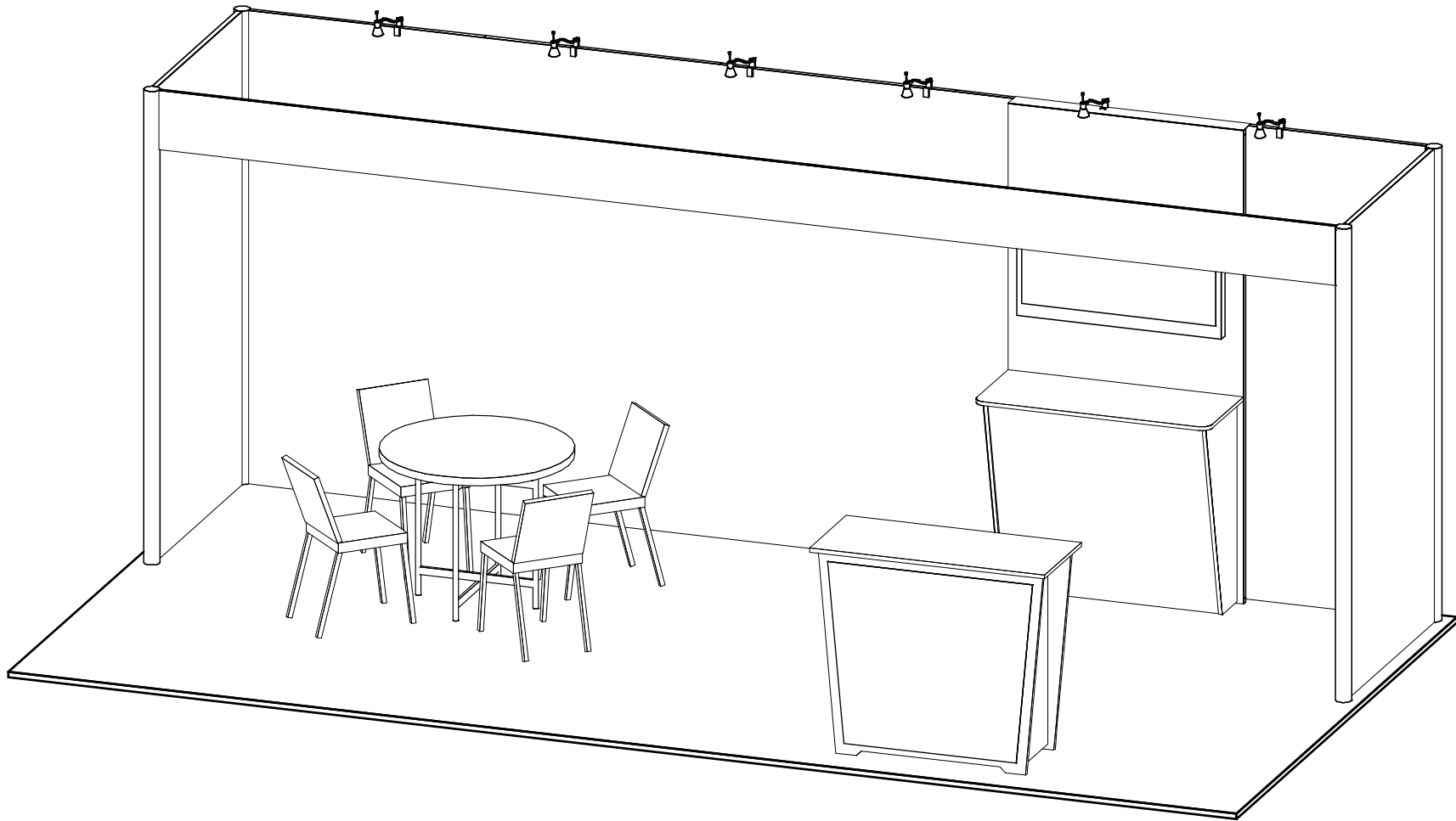
DESIGN :EV2-ML73.2

DATE: 12/23/22

REFERENCE: 10x20

© 2022

The designs shown herein are protected by copyright and other laws. This document is to be maintained in confidence. No portion of the information or design shown herein may be reproduced, electronically or otherwise, nor may any display be made from this design without written consent.



DRAWN BY: LH

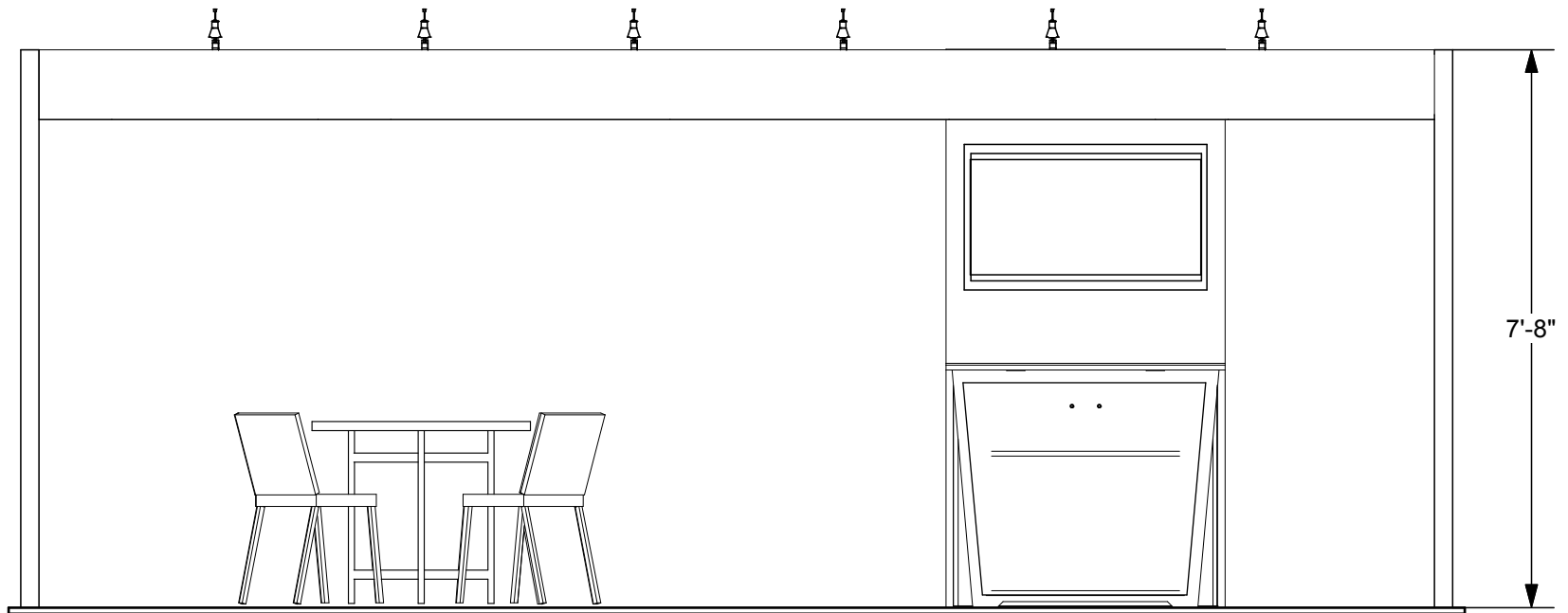
DESIGN :EV2-ML73.2

DATE: 12/23/22

REFERENCE: 10x20

© 2022

The designs shown herein are protected by copyright and other laws. This document is to be maintained in confidence. No portion of the information or design shown herein may be reproduced, electronically or otherwise, nor may any display be made from this design without written consent.



DRAWN BY: LH

DESIGN :EV2-ML73.2

DATE: 12/23/22

REFERENCE: 10x20

© 2022

The designs shown herein are protected by copyright and other laws. This document is to be maintained in confidence. No portion of the information or design shown herein may be reproduced, electronically or otherwise, nor may any display be made from this design without written consent.