

10x20 LIGHTBOX rental to include:

138" w x 92" h lightbox for mural backwall

(1) "EV2" double wide standalone counter, 7" w x 20" d black laminate top

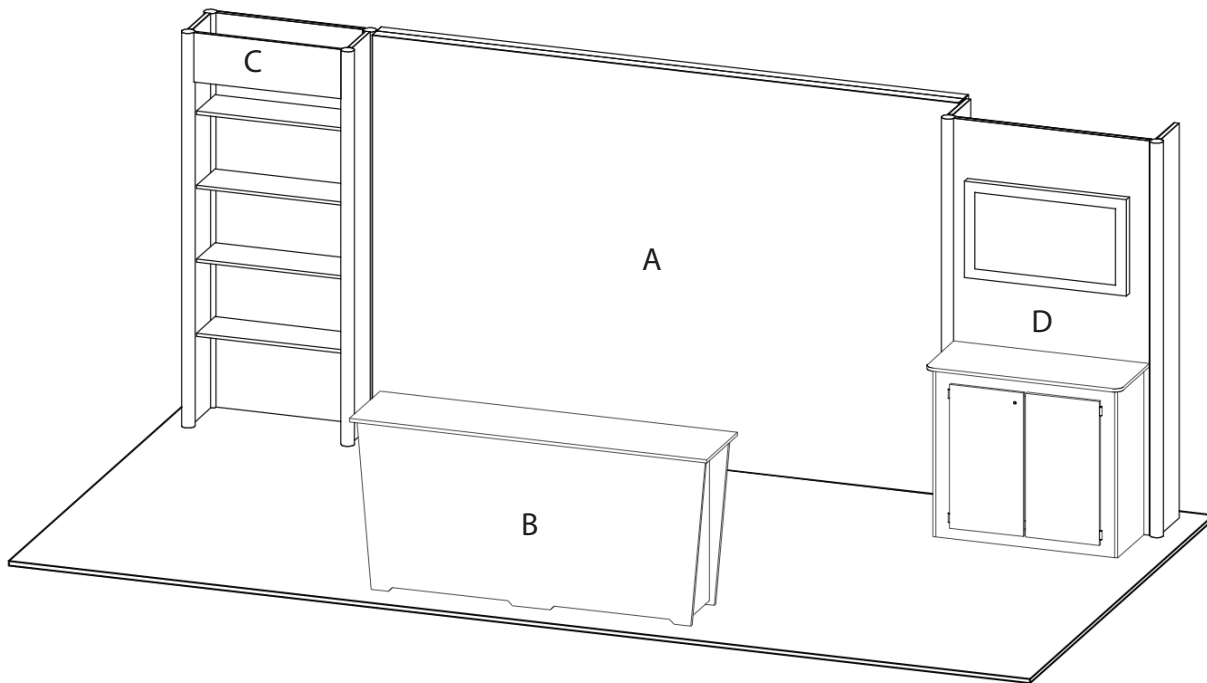
(1) 3' w product alcove with (4) 12" d black laminate shelves & header

(1) "Box" workstation with black laminate top and built in monitor mount accommodates up to 46" w monitor. Height is not adjustable, position may vary based on your model

CHOICE of black, white, or gray sintra provided standard for all solid infill walls that do not have graphics, unless described otherwise

\*White laminate standard for EV2 wall counter sides and standalone counter front and sides

Consult your account rep for options. Additional elements, merchandising and graphics are available



GRAPHICS PACKAGE A TO INCLUDE

A. - (1) 138" w x 92" h fabric graphic required

B. - (1) 78" w x 35" h maximum size, SINGLE USE "low-tac" adhesive, front. Refer to template provided.

White laminate will be visible 2" at the edges or behind any smaller profile cut graphics. (Vector art/cut lines must be provided for profile.)

C. - (1) 34.5" w x 11.5" h header graphic

GRAPHICS PACKAGE B TO INCLUDE

Package A, PLUS

D. - (1) 46" w x 92" h printed Sintra panel (behind monitor)

**PRICING DOES NOT INCLUDE chairs, benches, tables, computers, monitors/cables, and carpet. Additional elements, merchandising and graphics are available through your account representative.**

**Please follow our graphic file submission guidelines for all printed elements to avoid resubmission requests and delay. Allow at least 10 business days for graphic production.**

orbit

# Harness the Power of Your Data Unified Self-Service Reporting + Analytics

**Orbit Integrations**  
Oracle EBS • PeopleSoft • Taleo  
Oracle Cloud • JDE • Excel  
and many other applications



 **orbit**  
reporting + analytics

# orbit

## Harness the Power of Your Data Unified Self-Service Reporting + Analytics

### Orbit Integrations

Oracle EBS • PeopleSoft • Taleo  
Oracle Cloud • JDE • Excel  
and many other  
applications

Single point of entry  
to access data from all  
key data sources

Easily build and share  
reports and dashboards  
using real-time data

Drill down into data  
with interactive charts  
and visualizations

Maintains essential  
data security and  
governance



**orbit**  
reporting + analytics

orbit

## Harness the Power of Your Data Unified Self-Service Reporting + Analytics

### Orbit Integrations

Oracle EBS • PeopleSoft • Taleo  
Oracle Cloud • JDE • Excel  
and many other  
applications

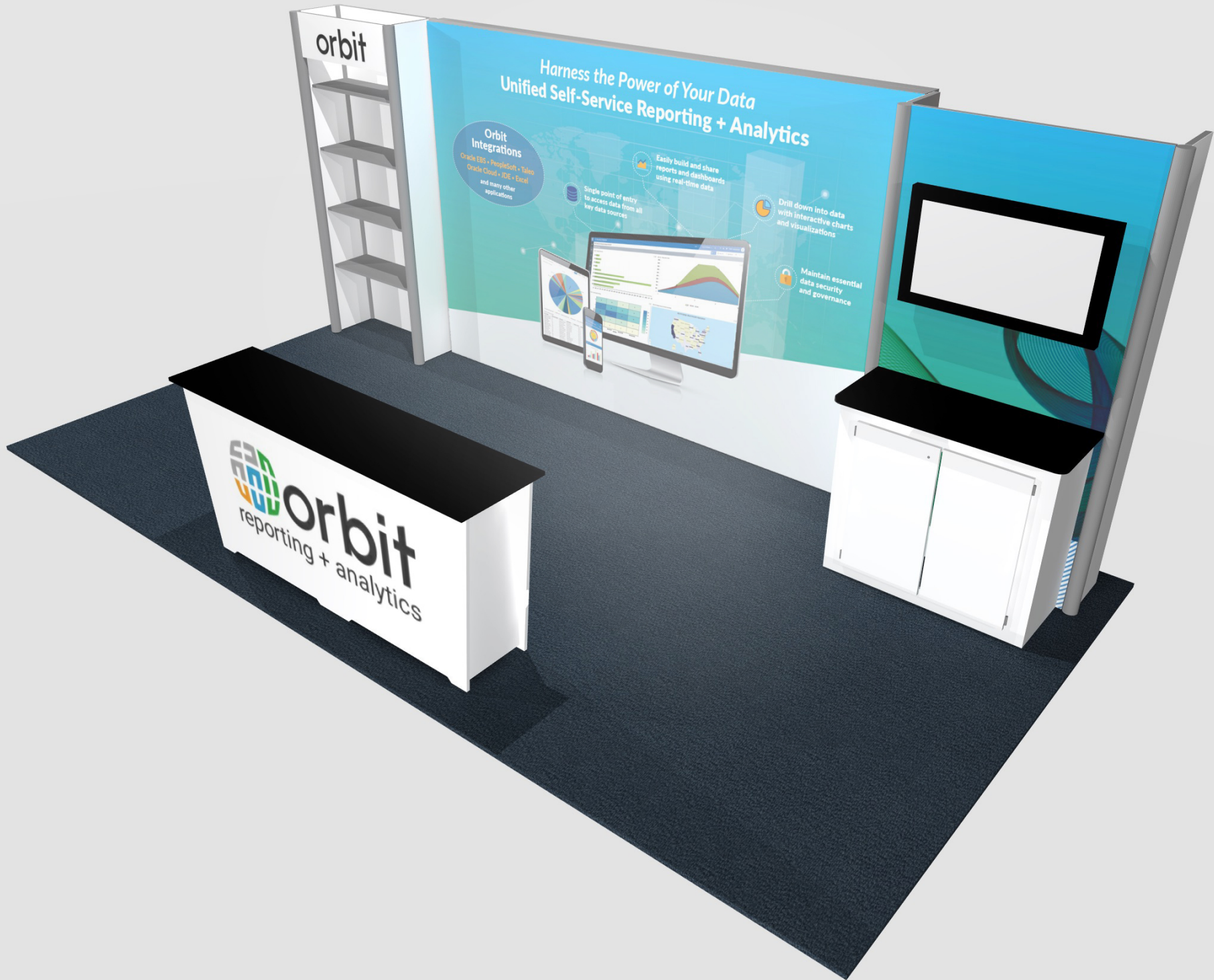
Single point of entry  
to access data from all  
key data sources

Easily build and share  
reports and dashboards  
using real-time data

Drill down into data  
with interactive charts  
and visualizations

Maintain essential  
data security  
and governance





orbit

# Harness the Power of Your Data Unified Self-Service Reporting + Analytics

**Orbit Integrations**  
Oracle EBS + PeopleSoft + Talco  
Oracle Cloud + JD Edwards + Excel  
and many other applications

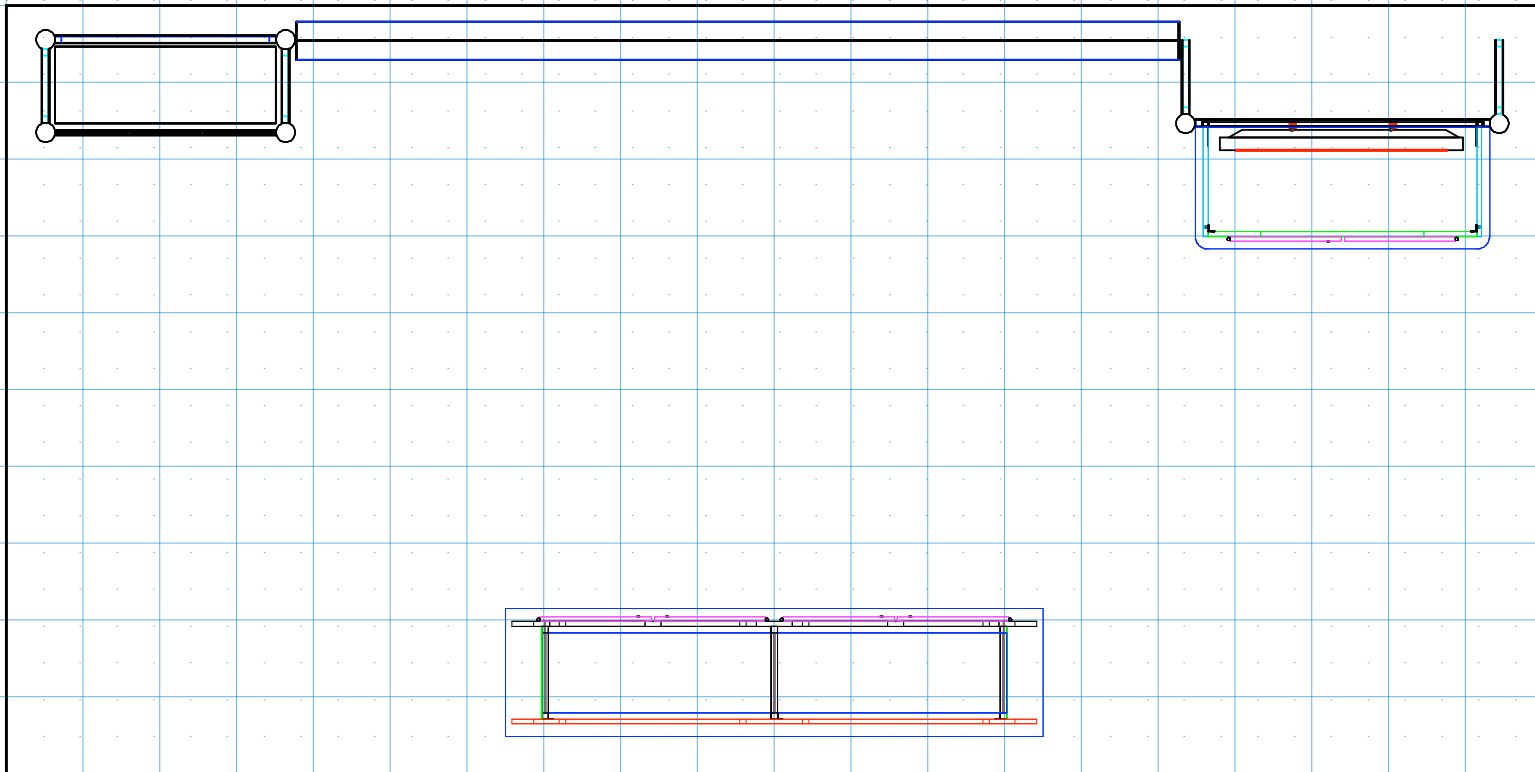
Single point of entry to access data from all key data sources

Easily build and share reports and dashboards using real-time data

Drill down into data with interactive charts and visualizations

Maintain essential data security and governance

**orbit**  
reporting + analytics



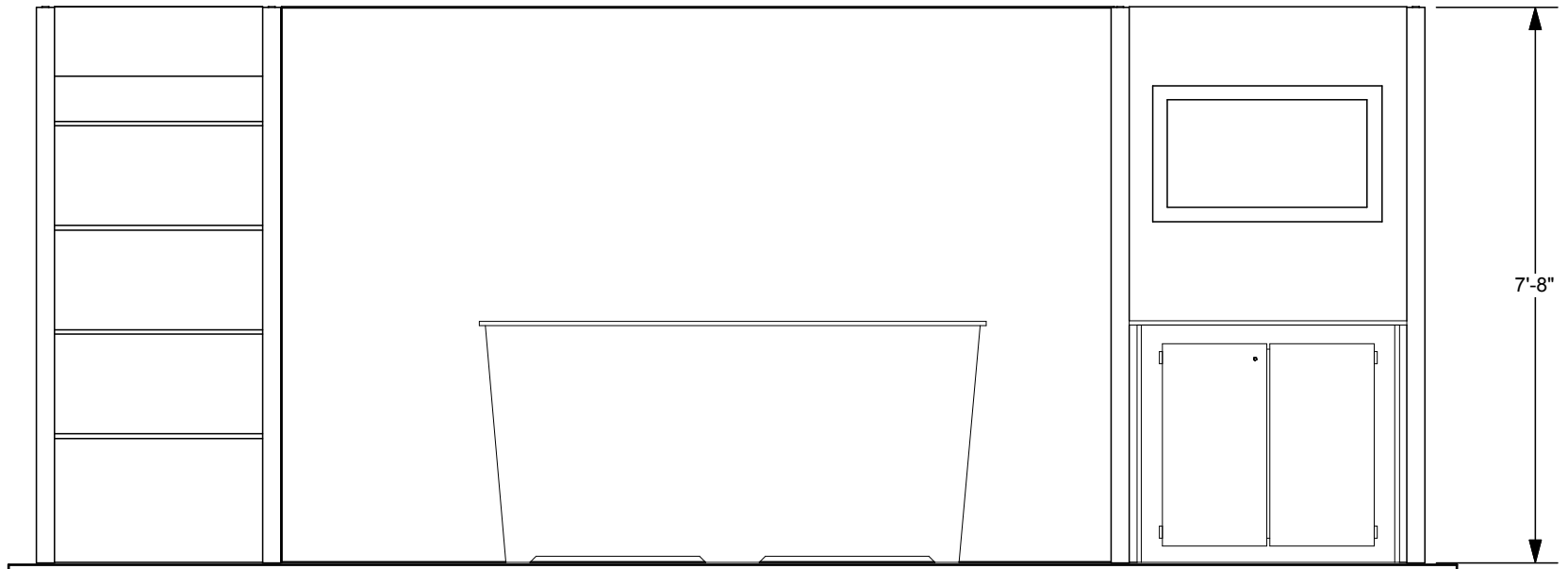
DRAWN BY: LH

**DESIGN CR1020-BL Image Turnkey Rentals 818-563-3322**

**REFERENCE: 10X20**

**© 2020**

The designs shown herein are protected by copyright and other laws. This document is to be maintained in confidence. No portion of the information or design shown herein may be reproduced, electronically or otherwise, nor may any display be made from this design without written consent.



DRAWN BY: LH

**DESIGN :CR1020-BL Image Turnkey Rentals 818-563-3322**

**REFERENCE: 10X20**

**© 2020**

The designs shown herein are protected by copyright and other laws. This document is to be maintained in confidence. No portion of the information or design shown herein may be reproduced, electronically or otherwise, nor may any display be made from this design without written consent.

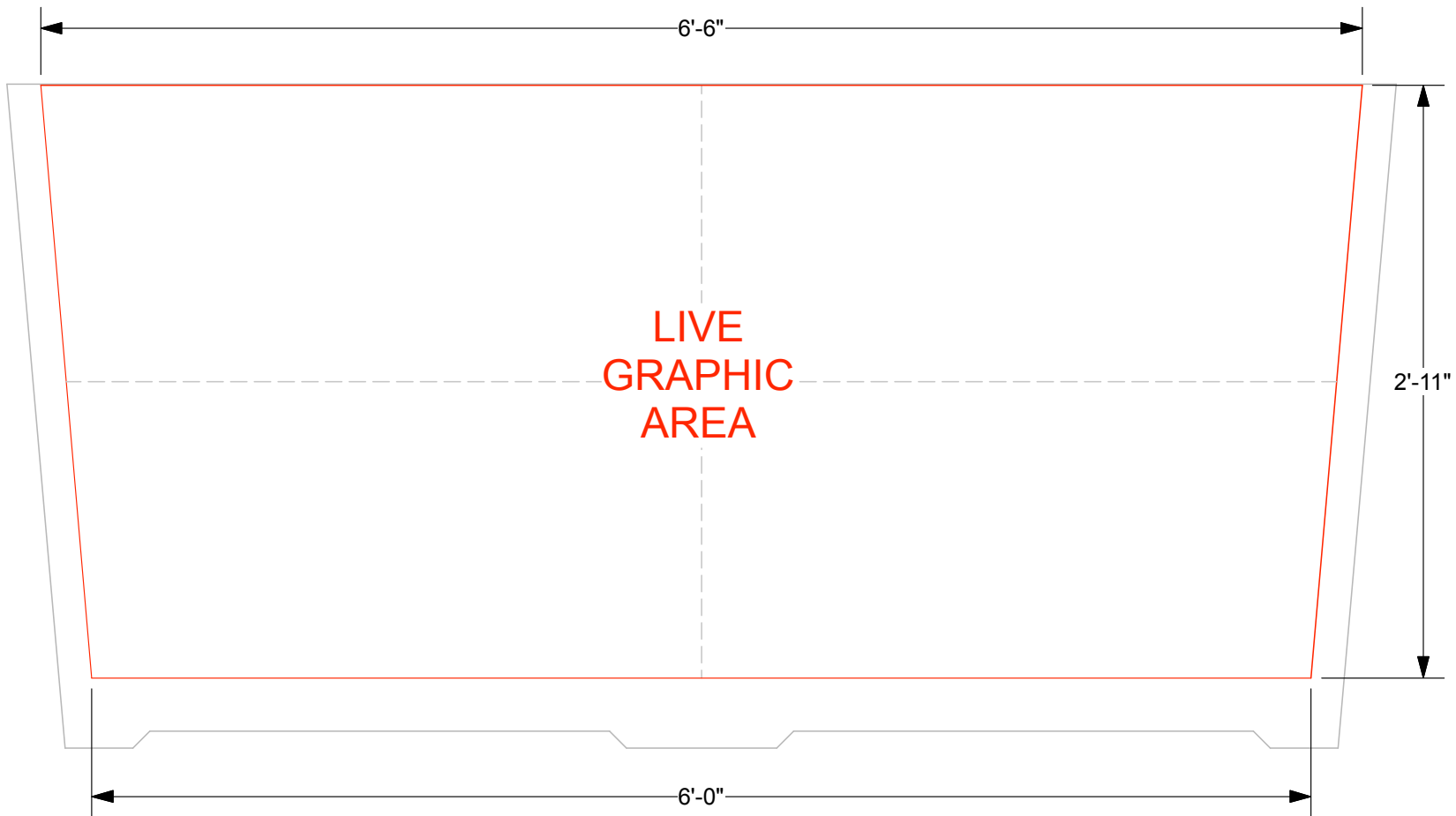
# EV2 STANDALONE DOUBLE WIDE COUNTER - STANDARD FRONT GRAPHIC SPECIFICATIONS

Graphic will be created as a low-tac adhesive fabric decal, **for one time use application**.  
Graphics must be reprinted for additional events.

Template shows maximum live graphic size of 78"w (at top) x 35"h.  
Profile cut art may be smaller, and will be centered on counter front.  
Vector cut lines must be provided in supplied art files for profile cut decals.  
White laminate counter front will be visible around decal.

Please provide .5" bleed at all edges in art files.

- COUNTER, 82"w x 39.25"h total dimension of front
- MAXIMUM LIVE GRAPHIC AREA, 78"w x 35"h



DRAWN BY: NG

**DESIGN : EV2 Graphic    Image Turnkey Rentals    818-563-3322**

The designs shown herein are protected by copyright and other laws. This document is to be maintained in confidence. No portion of the information or design shown herein may be reproduced, electronically or otherwise, nor may any display be made from this design without written consent.