

---

**13'1" x 13'1" deck with Conference Room • Total height 17'4"**

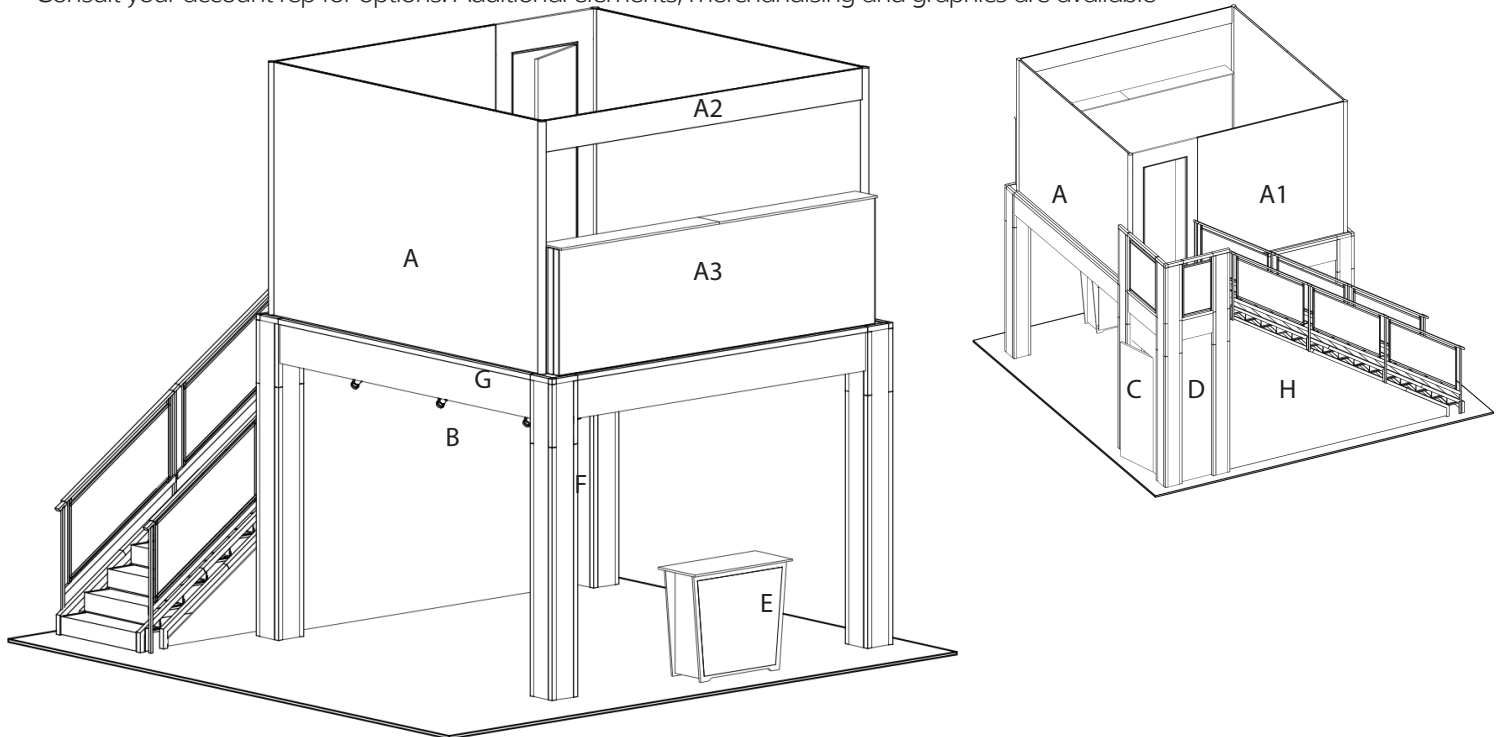
13 x 13 double deck rental to include:

- (1) 13'1" x 13'1" second level with landing and straight staircase
- (1) 138" wide backwall with extended storage closet under stairs and landing
- (1) 13' x 13' conference room, open front with half height lightbox
- (1) "EV2" locking standalone counter, 46"w x 20"d black laminate top
- (1) gray sintra ceiling with 12 track lights
- (1) 1/4" thick frosted plex rail infills

CHOICE of black, white, or gray sintra provided standard for all solid infill walls that do not have graphics, unless described otherwise

\*White laminate standard for EV2 wall counter sides and standalone counter front and sides

Consult your account rep for options. Additional elements, merchandising and graphics are available

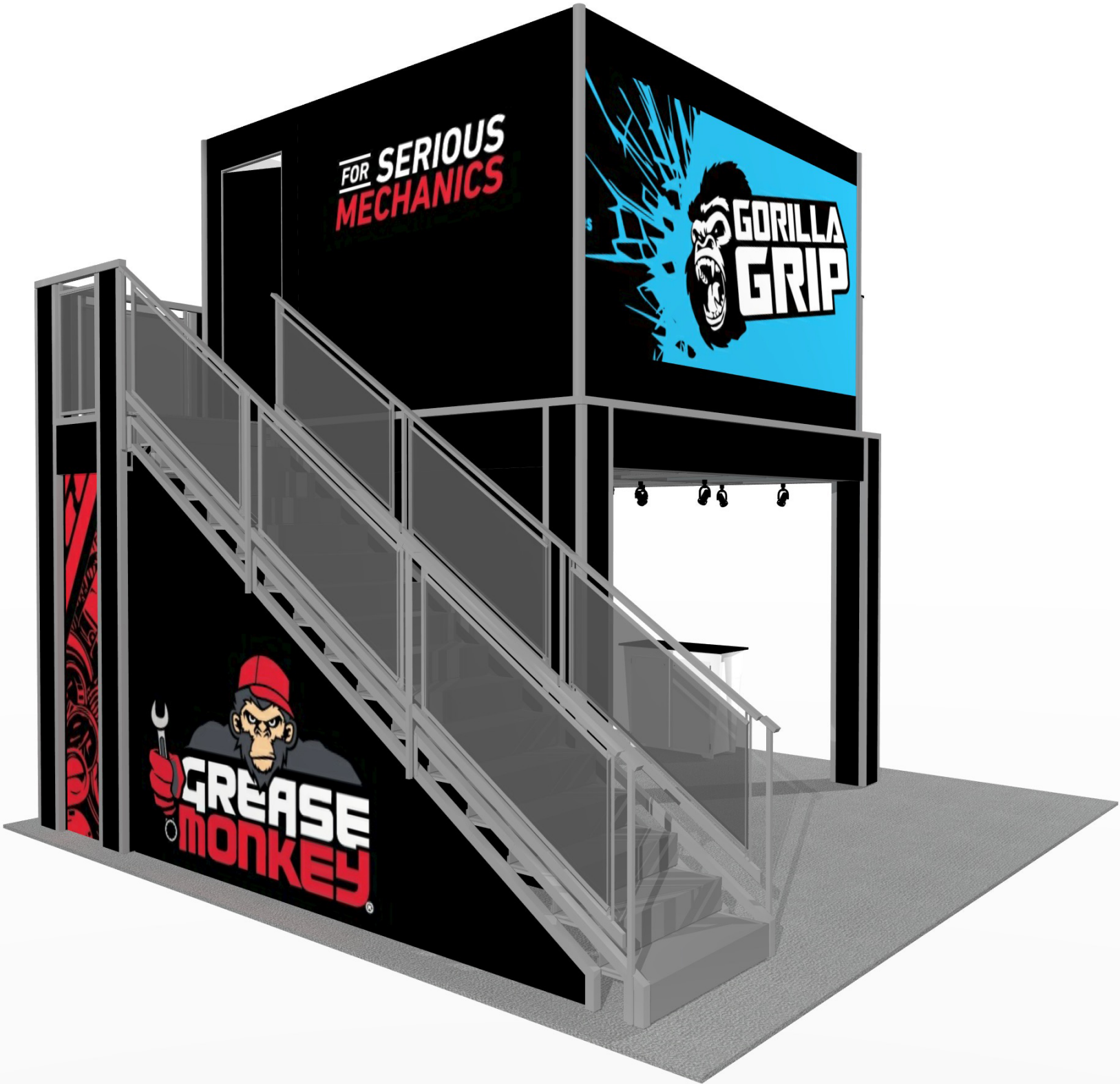


#### GRAPHIC SPECS

- A. - (2) 143.75" w x 92" h Sintra Graphic
- A1. - (1) 149.5" w x 92" h Sintra Graphic (includes door)
- A2. - (1) 149.5" w x 11.5" h rollable lamda graphic
- A3. - (1) 149.5" w x 46" h Backlit Fabric Graphic
- B. - (1) 137.5" w x 99" h Sintra Graphic (Back Wall)
- C. - (1) 38.5" w x 99" h Sintra Graphic (Panel with door)
- D. - (1) 22.5" w x 99" h Sintra Graphic (back panel of closet)
- E. - (1) 40" w x 35" h Counter Graphic
- F. - (28 pieces total) 7-7/8" wide x various height column infill (4 sides per column plus upstairs inside) 1 example piece notated
- G. - (6 pieces total) various widths x 14" high beam covers) 1 example piece notated
- H. - angle wall beneath stairs

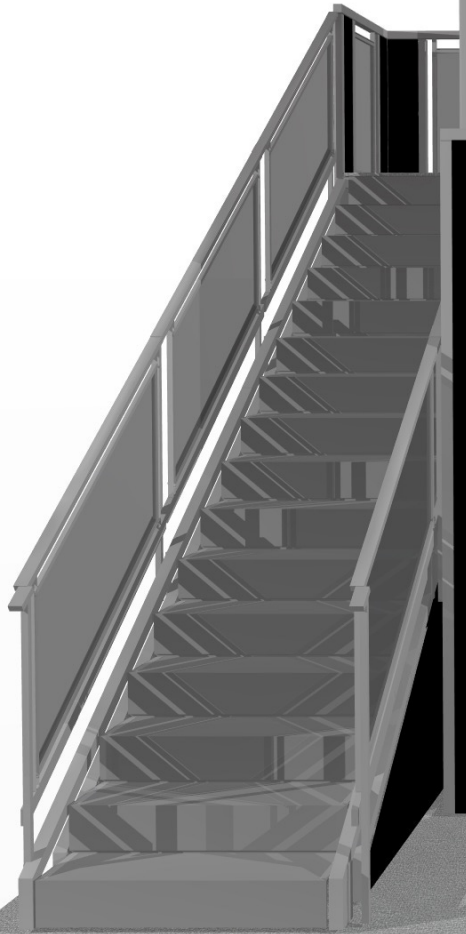
**PRICING DOES NOT INCLUDE chairs, benches, tables, computers, monitors/cables, and carpet. Additional elements, merchandising and graphics are available through your account representative.**

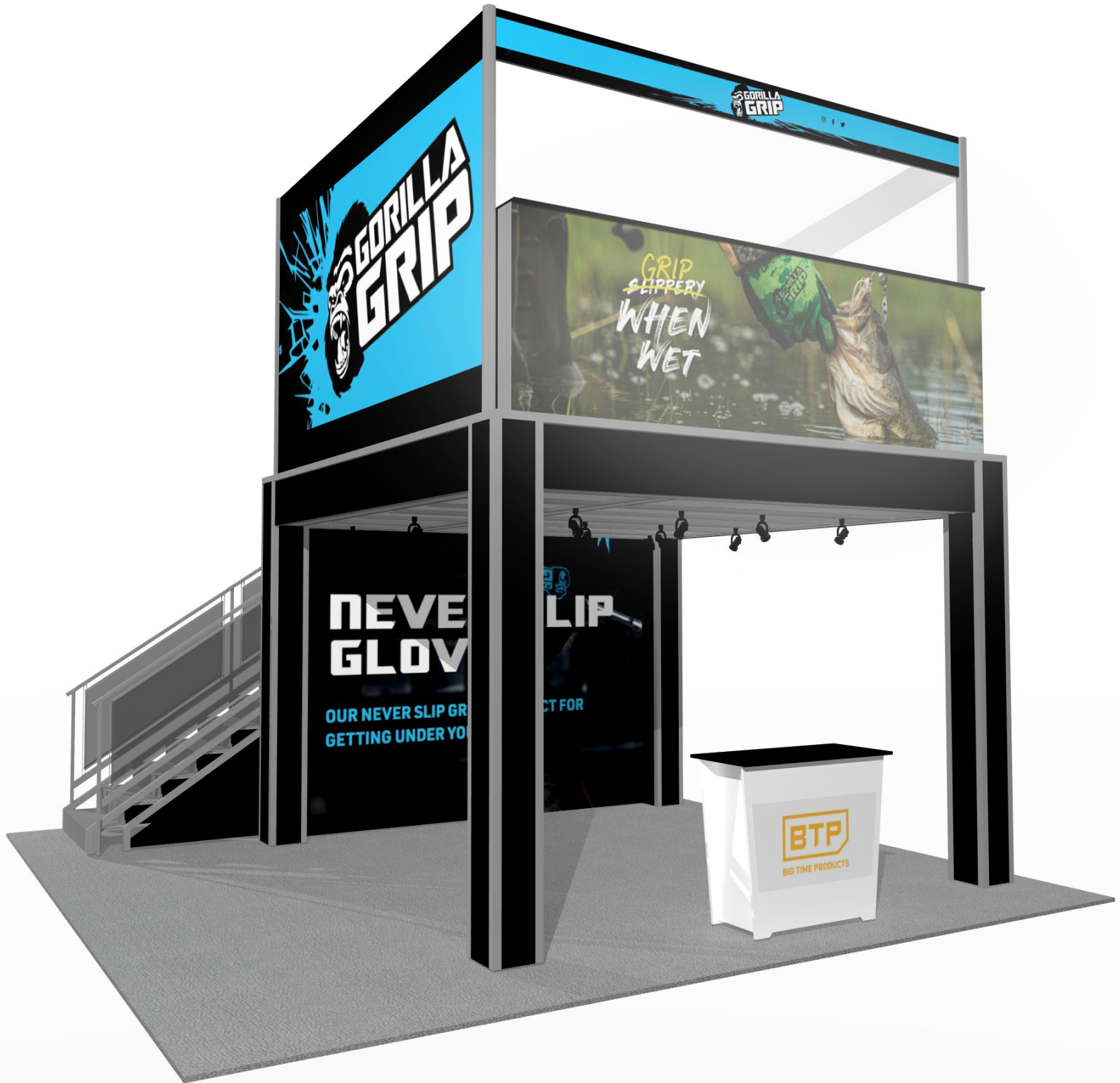
**Please follow our graphic file submission guidelines for all printed elements to avoid resubmission requests and delay. Allow at least 10 business days for graphic production.**



FOR SERIOUS  
MECHANICS







**GORILLA GRIP**

**GORILLA GRIP**

@ f w

**GRIP SLIPPERY WHEN WET**

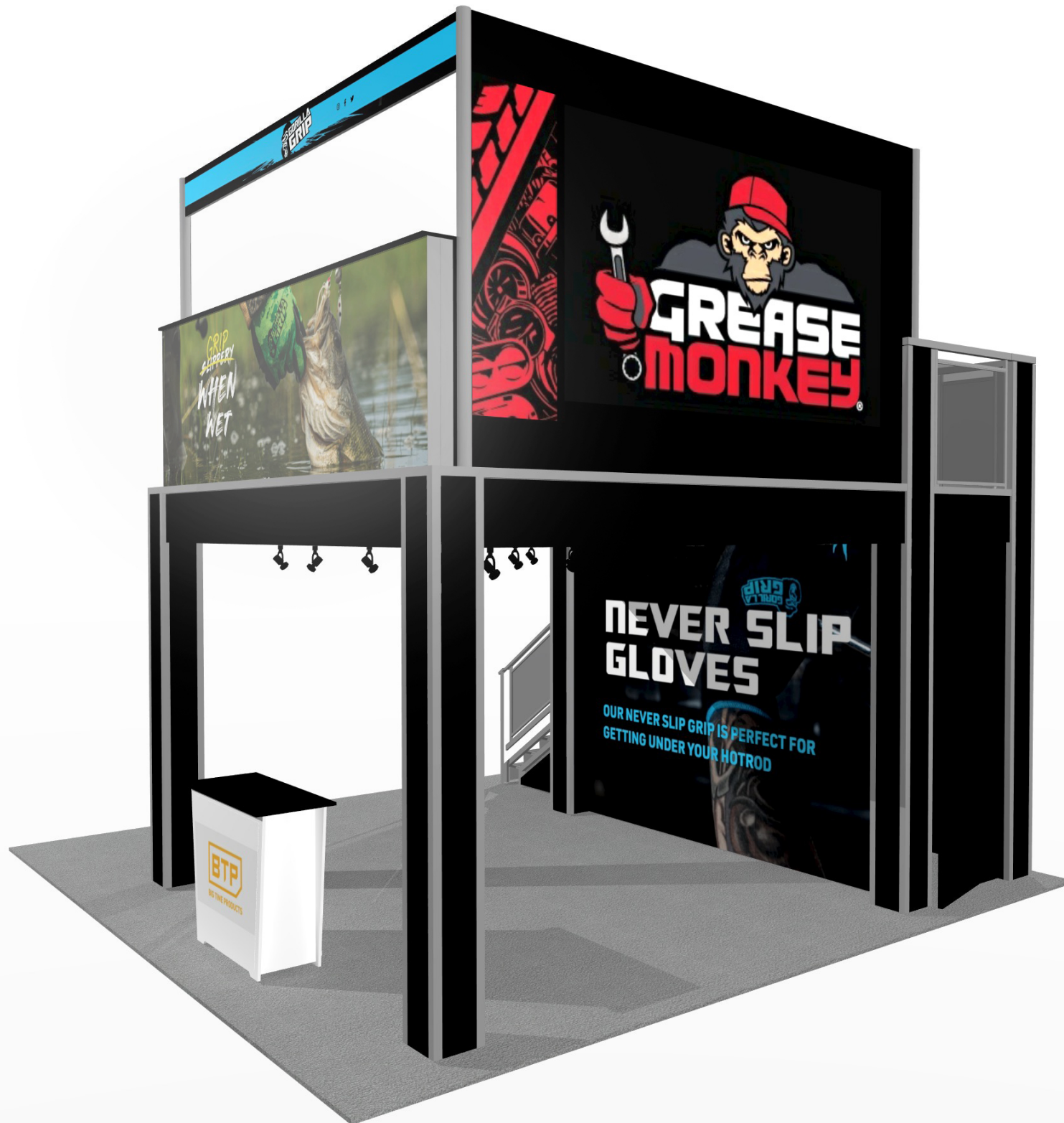
**NEVER SLIP GLOVES**

OUR NEVER SLIP GRIP GETTING UNDER YOUR FEET

PERFECT FOR

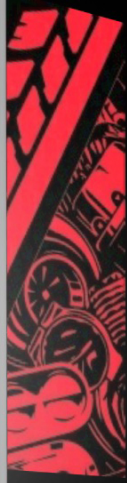
**BTP**

BIG TIME PRODUCTS



GREASE MONKEY

GRIP  
SLIPPERY  
WHEN  
WET

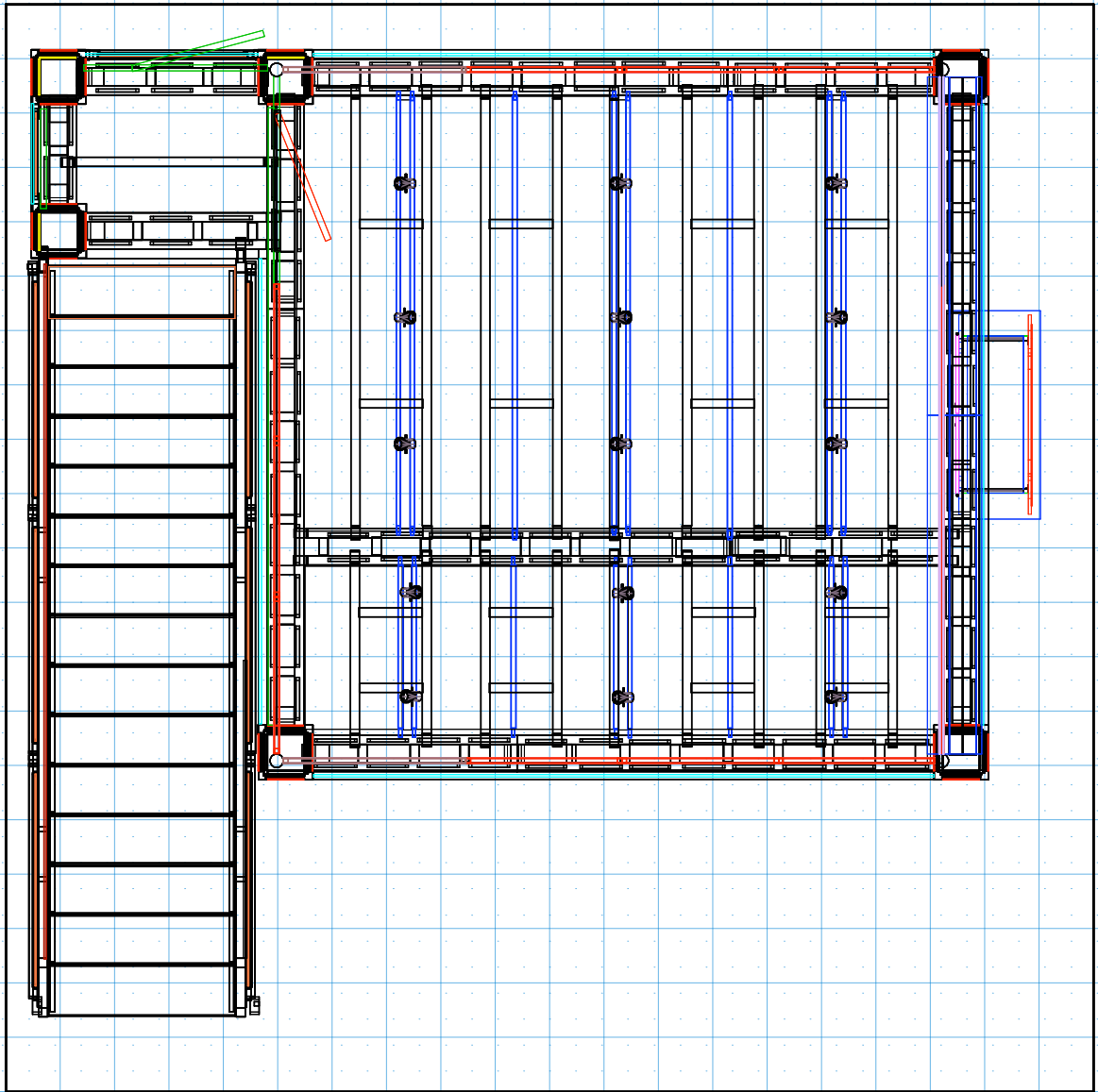


NEVER SLIP  
GLOVES

OUR NEVER SLIP GRIP IS PERFECT FOR  
GETTING UNDER YOUR HOTROD

BTP  
BEST TAKE PRODUCTS



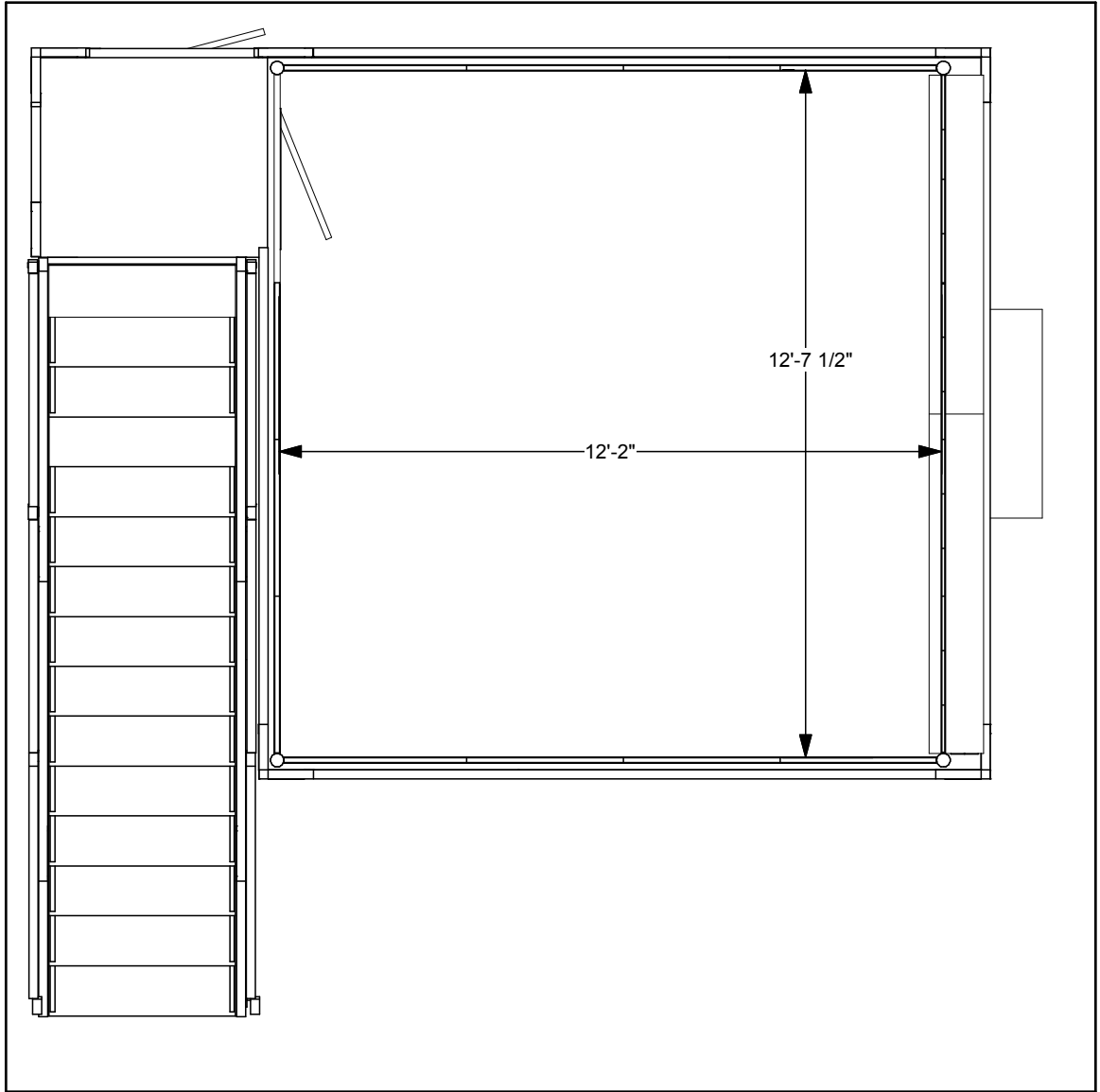


**DESIGN : AE2020V3-DD**

**Image Turnkey Rentals**

**818-563-3322**

The designs shown herein are protected by copyright and other laws. This document is to be maintained in confidence. No portion of the information or design shown herein may be reproduced, electronically or otherwise, nor may any display be made from this design without written consent.



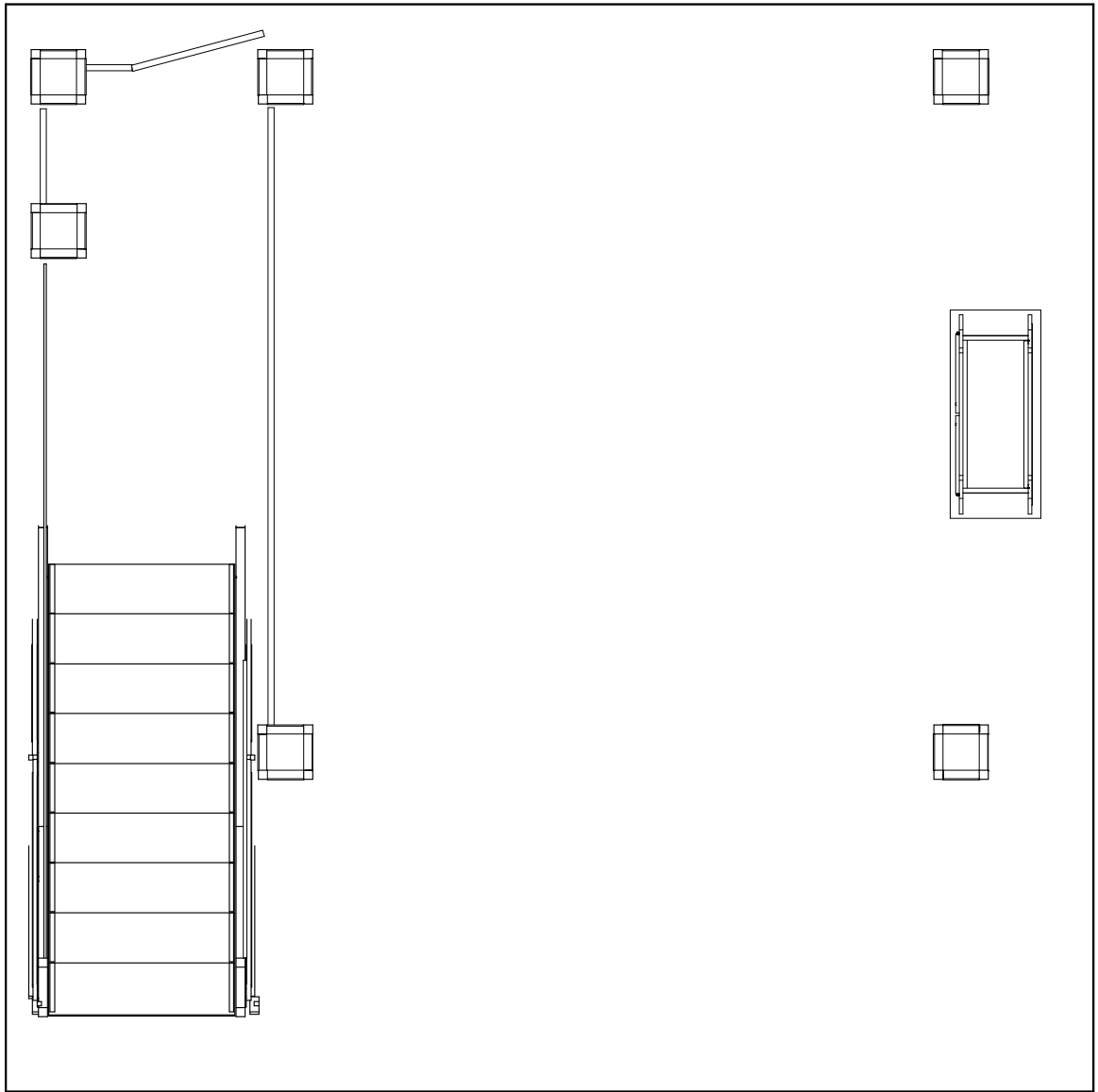
**DESIGN : AE2020V3-DD**

**Image Turnkey Rentals**

**818-563-3322**

The designs shown herein are protected by copyright and other laws. This document is to be maintained in confidence. No portion of the information or design shown herein may be reproduced, electronically or otherwise, nor may any display be made from this design without written consent.



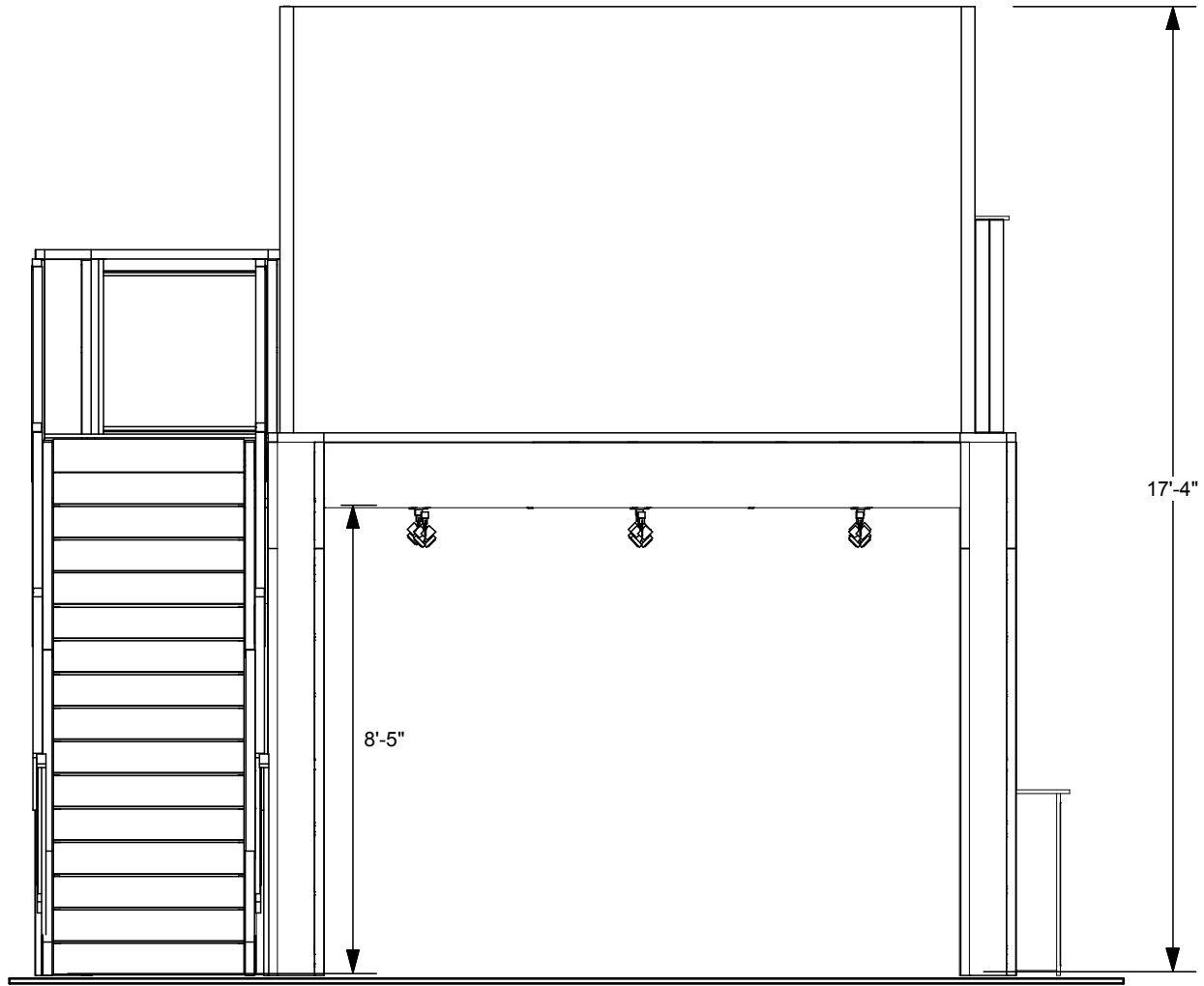


**DESIGN : AE2020V3-DD**

**Image Turnkey Rentals**

**818-563-3322**

The designs shown herein are protected by copyright and other laws. This document is to be maintained in confidence. No portion of the information or design shown herein may be reproduced, electronically or otherwise, nor may any display be made from this design without written consent.



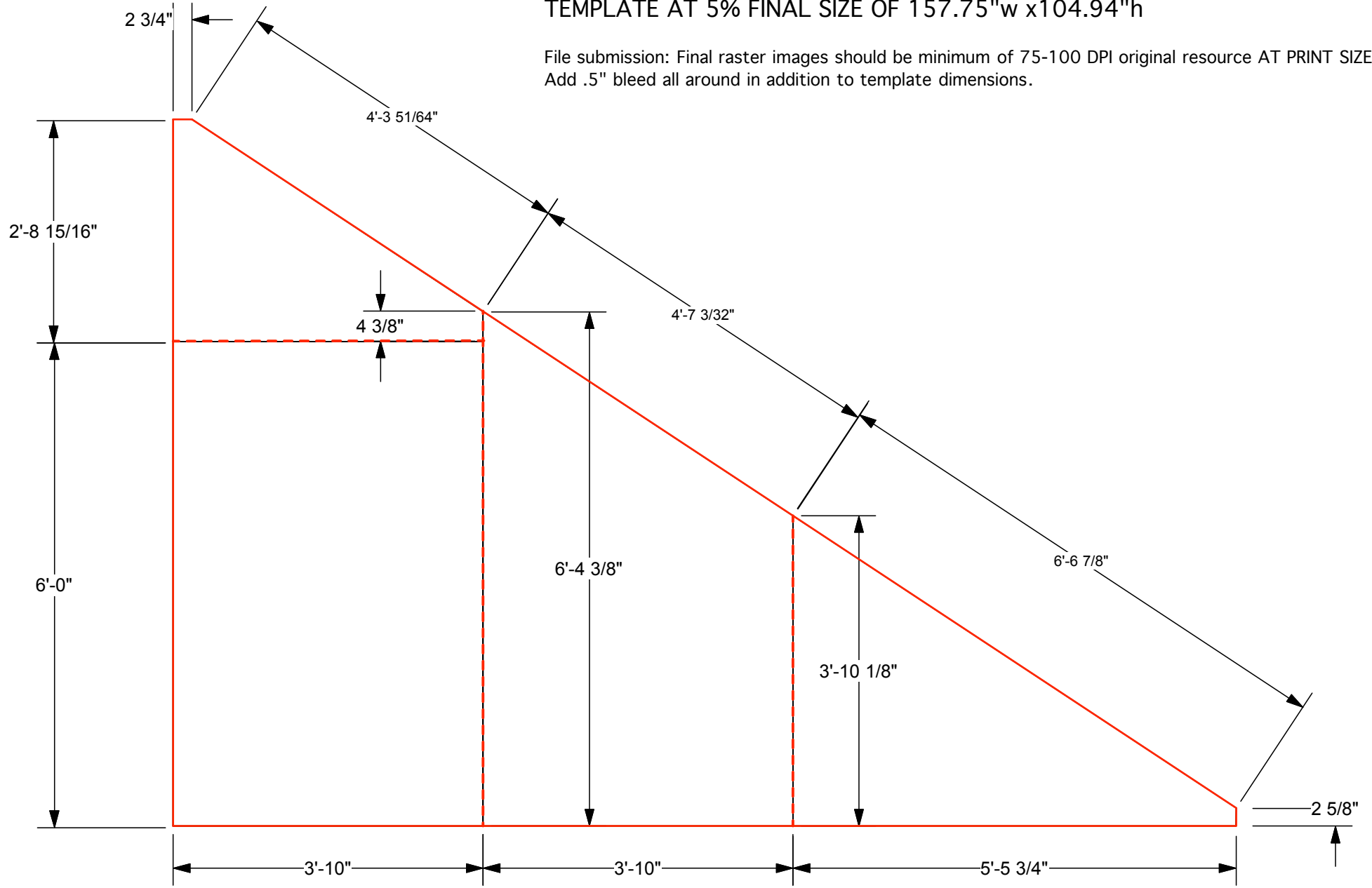
**DESIGN : AE2020V3-DD**

**Image Turnkey Rentals 818-563-3322**

The designs shown herein are protected by copyright and other laws. This document is to be maintained in confidence. No portion of the information or design shown herein may be reproduced, electronically or otherwise, nor may any display be made from this design without written consent.

# TEMPLATE AT 5% FINAL SIZE OF 157.75"w x104.94"h

File submission: Final raster images should be minimum of 75-100 DPI original resource AT PRINT SIZE. Add .5" bleed all around in addition to template dimensions.



**DESIGN : STAIR ANGLE WALL - REVERSE Image Turnkey Rentals**

**818-563-3322**

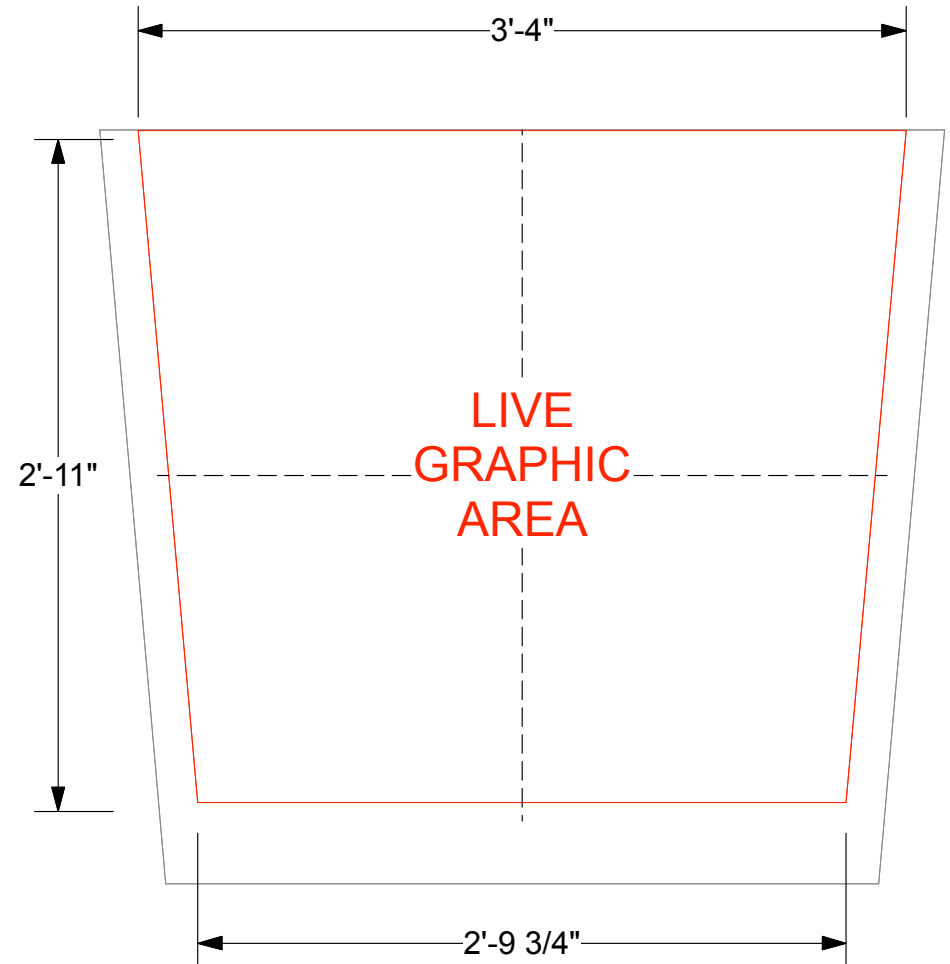
The designs shown herein are the protected by copyright and other laws. This document is to be maintained in confidence. No portion of the information or design shown herein may be reproduced, electronically or otherwise, nor may any display be made from this design without written consent.

## EV2 STANDALONE COUNTER - STANDARD FRONT GRAPHIC SPECIFICATIONS

Graphic will be created as a low-tac adhesive fabric decal,  
**for one time use application.**  
Graphics must be reprinted for additional events.

Template shows maximum live graphic size of 40"w (at top) x 35"h.  
Profile cut art may be smaller, and will be centered on counter front.  
Vector cut lines must be provided in supplied art files for profile cut decals.  
White laminate counter front will be visible around decal.

Please provide .5" bleed at all edges in art files.



- COUNTER, 44"w x 39.25"h total dimension of front
- MAXIMUM LIVE GRAPHIC AREA, 40"w x 35"h